

4" RUGGED ROUND LED POD

INSTALLATION GUIDE



1 Determine the best mounting location for the LED pod, ensuring it does not interfere or block any existing vehicle systems. The LED pod is supplied with a stainless steel (SS) universal mounting bracket and hardware. (See Fig. 1)



Fig. 1

4 Loosely attach the LED pod to the mounting bracket using the (1) SS M8x55mm socket head cap bolt, lock washer, and SS lock nut. (Fig. 3) Aiming and tightening will be done once the wiring is complete. Silicone flat washers are provided, to use between the LED pod surface and the universal mounting bracket hardware, to protect the LED pod's finish if desired.



Fig. 3

5 To aim the LED pod, park the vehicle on a level surface approximately 25' from a preferably light-colored wall. Measure the vertical distance from the ground to the bottom of the installed LED pod. Place a piece of tape on the wall directly in front of the vehicle at the same vertical height as the bottom of the LED pod, creating an aiming target.

6 Turn the LED pod ON. Direct the bright spot of the light beam no higher than the aiming target on the wall. Be careful with the light housing as it gets hotter the longer the light is on. It is recommended to wear leather work gloves when handling a hot light. Tighten the M8x55 mm socket head cap bolt to 188 in-lbs. (21.2 N-m) torque.

Carefully read and understand the following instructions before proceeding.

! WARNINGS

- Do not look directly at the beam during LED pod operation as it is extremely bright when lit.
- Check with local, municipal and state motor vehicle requirements regarding the use of "Off-Road" lighting to determine if there are any specific requirements regarding their installation and use.
- Do not operate the LED pod while driving on public roads.
- Mount the LED pod only on devices specifically designed for that purpose, i.e. LED pods, push bars, auxiliary light mounts, etc.
- Only operate under the specified voltages as mentioned in the specifications.
- Verify that the selected mounting location does not interfere with existing vehicle systems, i.e. airbag system sensors, forward and signal lighting, etc.
- Do not mount the LED pod in a location that obstructs the view of the driver.
- Ensure adequate clearance exists between the LED pod and its wiring, to any moving or rotating parts of the vehicle, i.e. tires/wheels, suspension, doors, etc.
- The LED pod becomes very hot during operation and remains hot after use. Do not touch the LED pod when hot or severe burns may result.
- Ensure the LED pod is mounted at a safe distance from temperature-sensitive objects.
- Allow the LED pod to cool prior to washing.
- The LED pod is designed to be mounted with the lens surface positioned in the vertical orientation when the vehicle is resting on a level surface.
- When laying out wire routing, stay clear of radio antenna and wiring to minimize radio interference.
- Do not route wires along or near hot, sharp, or moving surfaces that might damage the wiring.
- Use appropriately sized switches, wires, and circuit fusing.
- Professional installation is recommended.

2 Loosely attach the universal mounting brackets at your desired location, using the (1) SS M10x25 mm hex head bolt, flat washer, lock washer, and M10 nut on a flat surface. (Fig. 2)

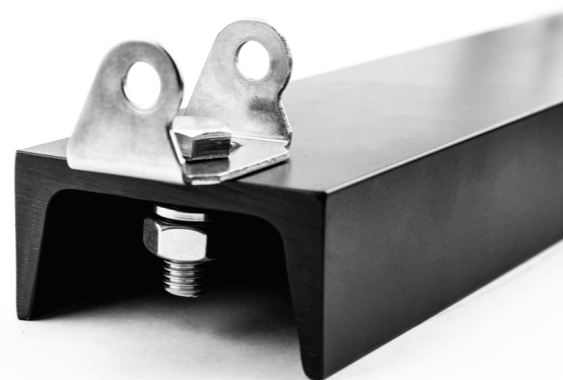


Fig. 2

3 Torque the M8 locknuts to 372 in-lbs. (42 N-m).

